



# Election Judge News

## Board of Elections Staff Points of Contact

- Kaye Robucci, Director  
240-313-2053  
kaye.robucci@maryland.gov
- Barry Jackson, Deputy Director  
240-313-2054  
barry.jackson@maryland.gov
- Teresa Morningstar, Supervisor & Absentee Voting  
240-313-2052  
teresa.morningstar1@maryland.gov
- Tammi Derr, Election Judge Coordinator & Voter Registration  
240-313-2058  
tamara.derr@maryland.gov
- Carl Dayley, IT Program Specialist  
240-313-2055  
carl.dayley@maryland.gov

Volume II, Issue 5

May 20, 2021

## The Moving Edition, Part 2

The office and warehouse have now been moved from 35 W. Washington Street to 17718 Virginia Avenue. We are now in the process of emptying boxes and getting settled in. Thanks to all those who helped us get moved in. The transition went off without a hitch accord-

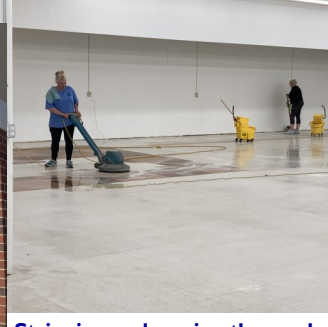
ing to schedule.

The warehouse move included all of the voting equipment and election judge supplies that were housed at 101 Tandy Drive.

We hope to have an open house in the summertime, once we're completely moved in and COVID restrictions are eased (fingers crossed!) We'll keep you posted. In the meantime, here are some images from the days leading up to the move.



Front of building with street number installed.



Stripping and waxing the work area where all the voting equipment will be stored.



Finished product: waxed floors in work area.

### Inside this issue:

The Moving Edition, Part 2 1-2

Election Related Bills 2

Training Center 2

Trivia Question 2



Tammi Derr, our Election Judge Coordinator, at her new desk. Office Supervisor Teresa Morningstar in her new office in the background.



"Goodbye, old friend!" The cleaned out old office at 35 W. Washington Street.



Washington County, MD  
BOARD OF ELECTIONS

17718 Virginia Avenue  
Hagerstown, MD 21740

Phone: 240-313-2050  
Fax: 240-313-2062

Email:  
washco.elections@maryland.gov

[www.washco-mdelections.org](http://www.washco-mdelections.org)

Questions or comments about  
the Election Judge News?  
Contact the editor,  
Barry Jackson

Phone: 240-313-2054  
Email:  
barry.jackson@maryland.gov

## Election Judge News

### The Moving Edition, Part 2 (cont.)

The warehouse equipment and supplies were moved to the Virginia Avenue location on Tuesday, May 18th. Here are a few pictures of the move.



Carl depositing hundreds of voting booths in their new home.



Rows of pallets of equipment and supplies.



Installing shelves in the Election Judge supply area.



The sea of precinct and ballot transfer carts in the new warehouse.

### Election Related Bills in Annapolis

The 2021 General Session is over, and the following election related bills have become law:

**SB683/HB1048** create a permanent absentee list where voters who opt in will automatically receive an absentee ballot in each election. The law also requires that every voter not on the list will receive an absentee ballot application, same as we did in the 2020 General Election. The law also establishes ballot drop boxes as a permanent fixture in future elections.

**HB745** changes the requirement for number of Early Voting sites per registered voters. In Washington County's case, once we reach 100K active voters (sometime this year), we will be required to have

three Early Voting sites. That's good news for election judges who would like to work Early Voting, because we'll need a lot of you!

**SB596/HB206** changes Early Voting hours of operation to 7AM-8PM, same as Election Day. Eight straight days of Election Day? Bring it on!

### Training Center

#### 1.12 General Rules for All Election Judges

- Do not wear campaign buttons, t-shirts, or other political items. Election judges are not allowed to electioneer or campaign.
- Do not talk about candidates or political issues among your fellow election judges, voters, or with anyone inside the voting room and within the "No Electioneering Zone."
- Help all voters promptly and politely. Watch for voters who need help.
- Do not leave the polling place at any time.

- Do not smoke inside the site or at the entrance to the polling place.
- Dress comfortably and appropriately.
- Do not bring family members or friends with you to help. Only voters and people approved by the Board of Elections are allowed in the polling place.
- Keep conversations with family members, friends, and neighbors short. Stay focused on the voting process.
- Remain at your work station at all times. Only leave your work station when you are on an assigned break, using the restroom, helping a voter or following the directions of a chief judge.
- No electronic devices may be used in the polling place, except as authorized by the Board of Elections.

### Trivia Question

What is Maryland's State Song?