



**Board of Elections
Staff Points of Contact**

- Kaye Robucci, Director
240-313-2053
kaye.robucci@maryland.gov
- Barry Jackson, Deputy Director
240-313-2054
barry.jackson@maryland.gov
- Teresa Morningstar, Supervisor & Absentee Voting
240-313-2052
teresa.morningstar1@maryland.gov
- Tammi Derr, Election Judge Coordinator & Voter Registration
240-313-2058
tamara.derr@maryland.gov
- Cory Green, Election Program Assistant
240-313-2055
corya.green@maryland.gov
- Carl Dayley, Election Program IT Specialist
240-313-2067
carl.dayley@maryland.gov

Inside this issue:

- Election Headquarters |
- Drop Boxes |
- Early Voting |
- L&A Testing |
- New Election Judges |
- New Map |
- Trivia Question |

Election Judge News

Volume III, Issue 6

June 24, 2022

Election Headquarters

We created an "Election Headquarters" link on our web page that gives voters everything they need to know about the upcoming Primary Election. Check it out here: <https://washco-md.org/election-headquarters>.

Drop Boxes

Ballot Drop Boxes are out and receiving mail in ballots from voters.



Thank you to those who signed up to pick up ballots at the drop boxes.

We still have a few slots left, so let Barry Jackson know if you're interested in helping out.

Early Voting

Early Voting is less than two weeks away! Sign Up Genius links have been sent to everyone who expressed an interest in working at Early Voting.

If you have not yet signed up, please do so soon. There are still plenty of slots available, but they should be going quickly.

If you are interested in working Early Voting and DID NOT receive the link, please notify Barry Jackson, and he will send it to you.

L&A Testing

Logic and Accuracy (L&A) testing is under way. This is where we test all the electronic voting equipment to ensure they are working properly before sending them out to the polling places.



The seals and tamper tapes that you verify on the equipment on Election Morning are put on the equipment at the end of L&A testing.

New Election Judges

We are still in need of about 100 election judges. That averages out to a shortage of about two election judges for every polling place.

This means that if we cannot fill these positions, the burden will fall on you to cover for missing judges at the polling place.

We have the final set of classes scheduled for Thursday and Friday, June 30 and July 1. We cannot have any more classes after that.

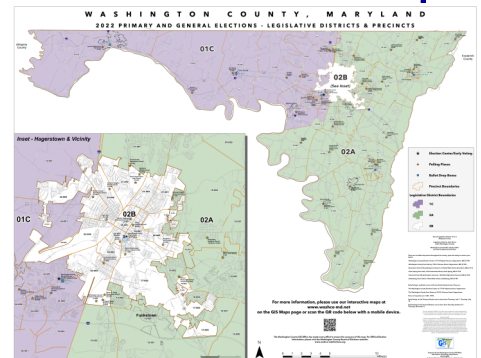
So if you know anyone at all who might be interested in being an election judge, please send them our way, so that we can get them into next week's classes.

New Map

We finally have a new map! The county GIS department completed the new Legislative, Election Districts & Precincts map this week. An image of the map is shown below.

You can also access the map on our website in the Election Headquarters section.

When you click on the link, you can type in your address, and the map will tell you what precinct you're in and what your polling place is.



Trivia Question

How many seats does Maryland have in the U.S. House of Representatives? Answer below: